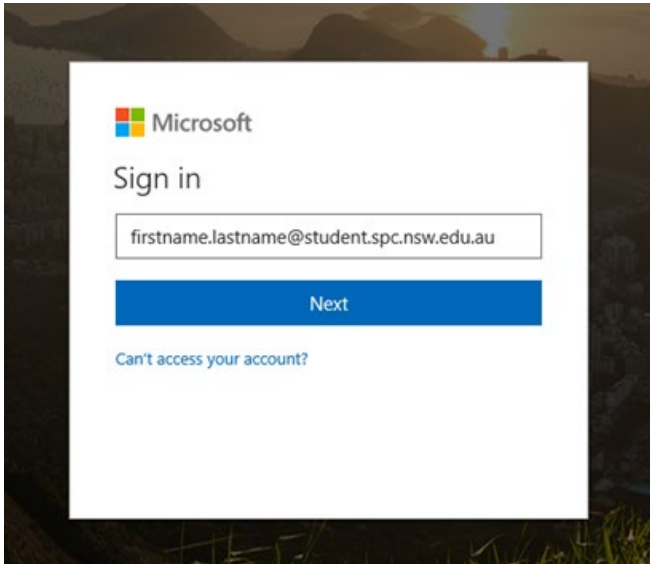


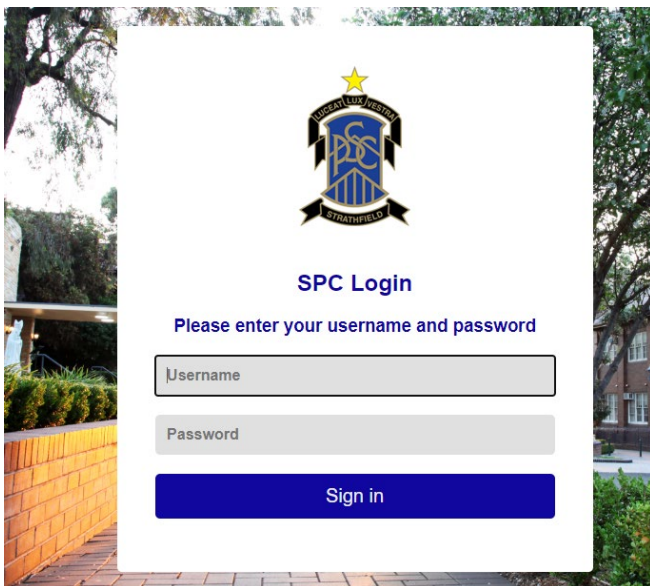
Office 365 Installation Guide for SPC

OSX

1. Go to: <https://portal.office.com> and put your full school email address.

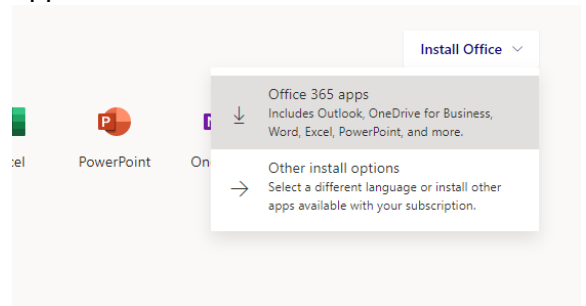


2. Login into the SPC Login page with your school username and password.

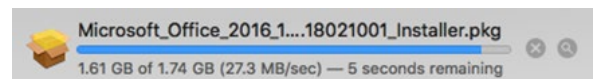
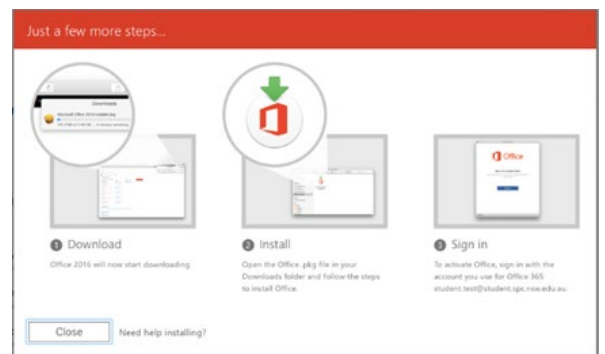


Username: firstname.lastname
Password: School Password

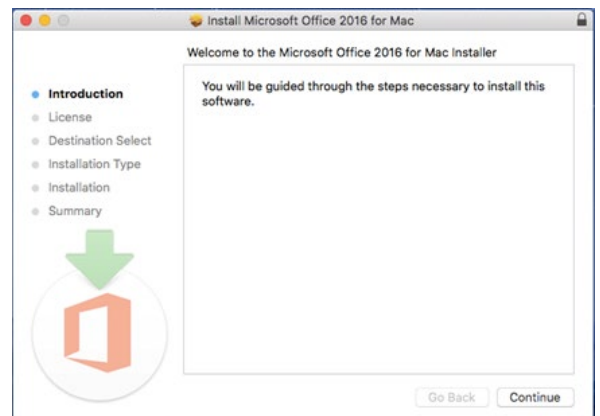
3. Once logged in, on the top right-side corner click "Install Office" and click "Office 365 apps".



4. Let the download finish and then open the package.



5. Follow the setup wizard and put your MAC password to allow the installation.



6. Once the installation has completed, open "Word" and login using your school email as before. You now have office installed.